

AESS-BFM60H800V

Hybrid Analog Camera Bullet Fixed Lens 3.6mm 8MP



1/2" CMOS sensor 4K UHD
 8 Megapixel (3840x2160)
 4in1 AHD, HD-CVI, HD-TVI, CVBS (UTC)
 3.6mm Fixed Lens YTOT F1.6 8MP
 Max Distance IR Led 40m
 18 SMD IR LED
 IP65
 DC12V



Panoramica

The SOL series is the ideal choice for large-scale projects and tasks that require reliability and versatility, where image quality and definition is a primary requirement. 8MP resolutions.

Funzioni

Digital Wide Dynamic Range

With the advanced Digital Wide Dynamic Range (DWDR) technology, the camera provides clear details in all those environments where the shooting scenes have brighter subjects and darker subjects. Thanks to the DWDR function, the images are shot with different exposure times depending on the lighter or darker parts which are then digitally combined to obtain perfect final images.

3D NR

3D NR is an innovative technology that enables the reduction of detected noise and eliminates random noise by comparing two sequential frames. This feature allows for significant noise reduction with little impact on sharpness, especially in low-light conditions.

OSD Multilingue - 4in1 Coaxial Control

The OSD menu offers the possibility to make various image adjustments and settings to meet the requirements of different installation needs. The OSD menu includes configurations such as backlight mode, day/night, white balance, "AHD/CVI/TVI/CVBS" video technology switch. The OSD menu of the camera can be accessed directly from the DVR using the UTC protocol. To be able to control the camera menu remotely, the DVR must support the UTC protocol.

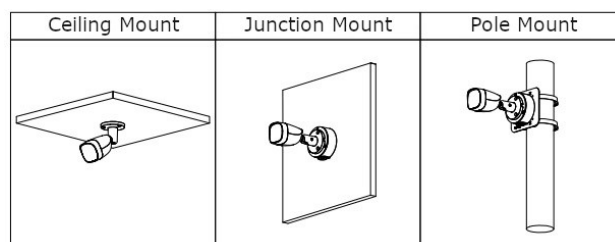
Protezione IP65

IP65: the camera has a waterproof degree which guarantees total protection against the penetration of solid bodies, the penetration of liquids by drops, vapours, sprays and jets of water in any direction.

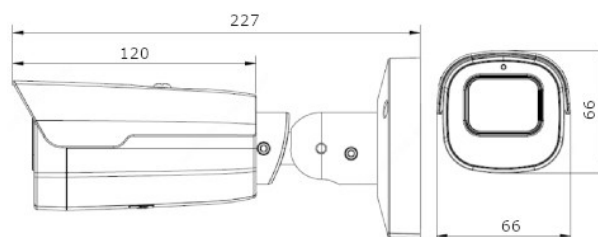
TECHNICAL SPECIFICATIONS

CAMERA	
Pixel	4K
Image Sensor	1/2" CMOS sensor 4K UHD
Max. Resolution	3480 (H) × 2160 (V)
Scanning System	Progressive
Electronic Shutter Speed	PAL: 1/3 s–1/100000 s NTSC: 1/4 s–1/100000 s
Min. Illumination	0.001Lux/F1.6, 30IRE, 0Lux IR on
S/N Ratio	>65 Db
Illumination Distance	40 m
Illuminator On/Off Control	Auto/Manual
Illuminator Number	18 SMD IR Led
PTZ	-
LENS	
Lens Type	Fixed focal
Focal Length / Angle of View	3.6 mm / 80°
Iris Control	-
VIDEO	
Video Frame Rate	20fps@4K
Resolution	8 MP (3840 x 2160)
Day/Night	Auto
BLC	BLC / HLC / DWDR
WDR	DWDR
White Balance	Auto / Manual
Gain Control	AGC
Noise Reduction	3D
Illumination Mode	IR Mode
PORT	
Video Output	1-channel BNC CVI/TVI/AHD/CVBS by coaxial control
Audio Input	-
POWER	
Power Supply / Consumption	12 VDC ± 30% /
STRUCTURE	
Operating Temperature & Humidity	-40 °C to +60 °C / <95% (RH)
Protection	IP65
Casing Material	Metallo
Product Dimensions / Net Weight	227mm x 66mm / 0.4 kg

INSTALLATION MODE

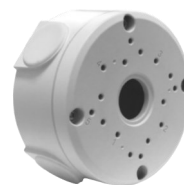


TECHNICAL DRAWING



ACCESSORIES

ETJ-JB04



ETB-VB05



ETP-15SF12H



ENVIO SECURITY SYSTEMS
 DN2, E85, Km 150 + 300m,
 Ramnicu Sarat,
 Buzau, Zip code: 127480,
 Romania