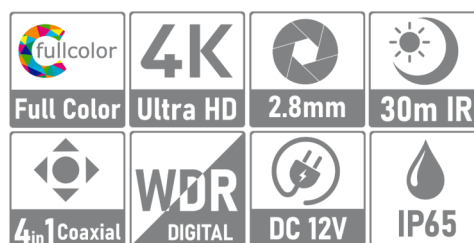


# AESS-BFP60H800L-W

## Hybrid Analog Camera Bullet Fixed Lens 3.6mm 8MP



4K Lite 1/3" CMOS Sensor  
 8 Megapixel (3480x2160)  
 4in1 AHD, HD-CVI, HD-TVI, CVBS (UTC)  
 2.8mm Fixed Lens  
 Max Distance warm Led 30m  
 4 Array warm LED  
 IP65  
 DC12V



### Panoramica

The LUNA series is the ideal choice for medium-large scale projects and activities that require high reliability and versatility. All products are designed to deliver the highest quality images full of detail and color. 2MP, 5MP and 8MP resolutions.

### Funzioni

#### Digital Wide Dynamic Range

With the advanced Digital Wide Dynamic Range (DWDR) technology, the camera provides clear details in all those environments where the shooting scenes have brighter subjects and darker subjects. Thanks to the DWDR function, the images are shot with different exposure times depending on the lighter or darker parts which are then digitally combined to obtain perfect final images.

#### 3D NR

3D NR is an innovative technology that enables the reduction of detected noise and eliminates random noise by comparing two sequential frames. This feature allows for significant noise reduction with little impact on sharpness, especially in low-light conditions.

#### OSD Multilingue - 4in1 Coaxial Control

The OSD menu offers the possibility to make various image adjustments and settings to meet the requirements of different installation needs. The OSD menu includes configurations such as backlight mode, day/night, white balance, "AHD/CVI/TVI/CVBS" video technology switch. The OSD menu of the camera can be accessed directly from the DVR using the UTC protocol. To be able to control the camera menu remotely, the DVR must support the UTC protocol.

#### Protezione IP65

IP65: the camera has a waterproof degree which guarantees total protection against the penetration of solid bodies, the penetration of liquids by drops, vapours, sprays and jets of water in any direction.

#### Warm Lights

With the help of warm light LEDs, the camera is able to provide a colorful and vivid image even in total darkness.

## TECHNICAL SPECIFICATIONS

CAMERA	
Pixel	4K-N
Image Sensor	1/3" CMOS Sensor
Max. Resolution	3480 (H) × 2160 (V)
Scanning System	Progressive
Electronic Shutter Speed	PAL: 1/3 s–1/100000 s NTSC: 1/4 s–1/100000 s
Min. Illumination	0.001 Lux/F1.0, 0 Lux warm light on
S/N Ratio	>65 Db
Illumination Distance	30 m
Illuminator On/Off Control	Auto/Manual
Illuminator Number	4 Array Warm Led
PTZ	-

LENS	
Lens Type	Fixed focal
Focal Length / Angle of View	2.8 mm / 86°
Iris Control	

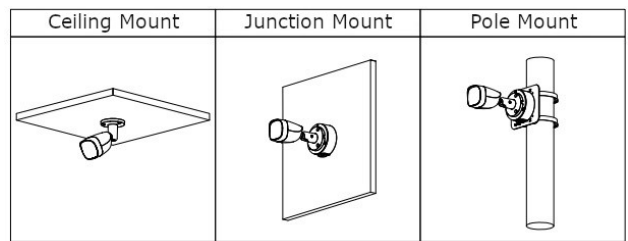
VIDEO	
Video Frame Rate	12.5fps@4K
Resolution	8 MP (3840 x 2160)
Day/Night	Color
BLC	BLC / HLC / DWDR
WDR	DWDR
White Balance	Auto / Manual
Gain Control	AGC
Noise Reduction	3D
Illumination Mode	Warm Mode

PORT	
Video Output	1-channel BNC CVI/TVI/AHD/CVBS by coaxial control
Audio Input	-

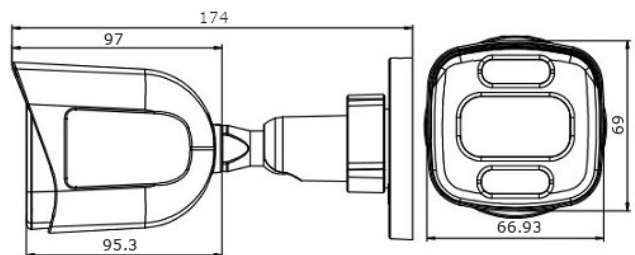
POWER	
Power Supply / Consumption	12 VDC ± 30% /

STRUCTURE	
Operating Temperature & Humidity	-40 °C to +60 °C / <95% (RH)
Protection	IP65
Casing Material	Plastica ABS
Product Dimensions / Net Weight	174mm x 69mm x 66.9mm / 0.21 kg

## INSTALLATION MODE

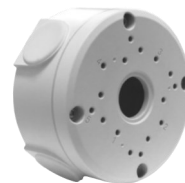


## TECHNICAL DRAWING



## ACCESSORIES

ETJ-JB04



ETB-VB04



ETP-15SF12H



**ENVIO SECURITY SYSTEMS**  
 DN2, E85, Km 150 + 300m,  
 Ramnicu Sarat,  
 Buzau, Zip code: 127480,  
 Romania