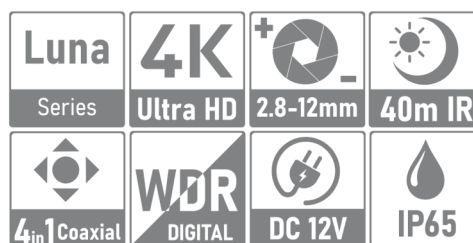


AESS-BVM75H800L

Hybrid Analog Camera Bullet Varifocal Manual Lens 2.8-12mm 8MP



4K Lite 1/3" CMOS Sensor
 8 Megapixel (3480x2160)
 4in1 AHD, HD-CVI, HD-TVI, CVBS (UTC)
 2.8mm - 12mm Varifocal manual lens
 Max Distance IR Led 40m
 24 SMD IR LED
 IP65
 DC12V



Panoramica

The LUNA series is the ideal choice for medium-large scale projects and activities that require high reliability and versatility. All products are designed to deliver the highest quality images full of detail and color. 2MP, 5MP and 8MP resolutions.

Funzioni

Digital Wide Dynamic Range

With the advanced Digital Wide Dynamic Range (DWDR) technology, the camera provides clear details in all those environments where the shooting scenes have brighter subjects and darker subjects. Thanks to the DWDR function, the images are shot with different exposure times depending on the lighter or darker parts which are then digitally combined to obtain perfect final images.

3D NR

3D NR is an innovative technology that enables the reduction of detected noise and eliminates random noise by comparing two sequential frames. This feature allows for significant noise reduction with little impact on sharpness, especially in low-light conditions.

OSD Multilingue - 4in1 Coaxial Control

The OSD menu offers the possibility to make various image adjustments and settings to meet the requirements of different installation needs. The OSD menu includes configurations such as backlight mode, day/night, white balance, "AHD/CVI/TVI/CVBS" video technology switch. The OSD menu of the camera can be accessed directly from the DVR using the UTC protocol. To be able to control the camera menu remotely, the DVR must support the UTC protocol.

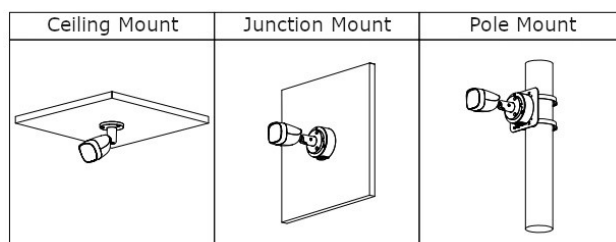
Protezione IP65,

IP65: the camera has a waterproof degree which guarantees total protection against the penetration of solid bodies, the penetration of liquids by drops, vapours, sprays and jets of water in any direction.

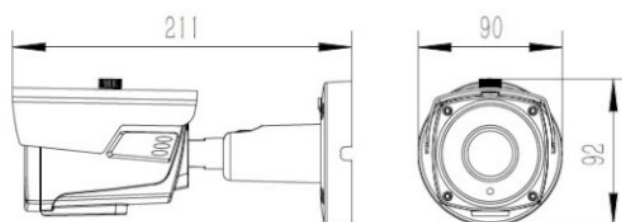
TECHNICAL SPECIFICATIONS

CAMERA	
Pixel	4K-N
Image Sensor	1/3" CMOS Sensor
Max. Resolution	3480 (H) × 2160 (V)
Scanning System	Progressive
Electronic Shutter Speed	PAL: 1/3 s–1/100000 s NTSC: 1/4 s–1/100000 s
Min. Illumination	0.001Lux/F1.6, 30IRE, 0Lux IR on
S/N Ratio	>65 Db
Illumination Distance	40 m
Illuminator On/Off Control	Auto/Manual
Illuminator Number	24 SMD IR Led
PTZ	-
LENS	
Lens Type	Varifocal Manual focal
Focal Length / Angle of View	2.8 mm - 12 mm / 86° - 23°
Iris Control	Manual
VIDEO	
Video Frame Rate	12.5fps@4K
Resolution	8 MP (3840 x 2160)
Day/Night	Auto
BLC	BLC / HLC / DWDR
WDR	DWDR
White Balance	Auto / Manual
Gain Control	AGC
Noise Reduction	3D
Illumination Mode	IR Mode
PORT	
Video Output	1-channel BNC CVI/TVI/AHD/CVBS by coaxial control
Audio Input	-
POWER	
Power Supply / Consumption	12 VDC ± 30% /
STRUCTURE	
Operating Temperature & Humidity	-40 °C to +60 °C / <95% (RH)
Protection	IP65
Casing Material	Metallo
Product Dimensions / Net Weight	211 mm × 92 mm x 90mm / 0.8 kg

INSTALLATION MODE

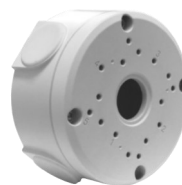


TECHNICAL DRAWING



ACCESSORIES

ETJ-JB04



ETB-VB04



ETP-15SF12H



ENVIO SECURITY SYSTEMS
 DN2, E85, Km 150 + 300m,
 Ramnicu Sarat,
 Buzau, Zip code: 127480,
 Romania