

IESS-BFM90SI500

Network Camera Bullet Fixed Lens 4mm 5MP



5MP 1/2.8" Cmos Sensor (2880x1660)

ONVIF 16.12

4 mm Fixed Lens

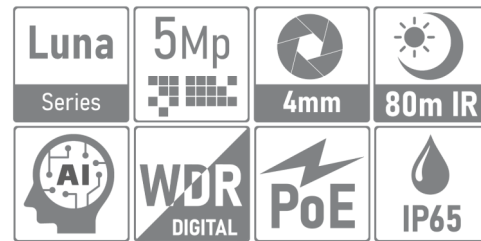
Max distance IR Led 80m

Human Recognition/Face Recognition/Video Analysis

4 Array IR LED

IP65

PoE IEEE802.3af/3at / DC12V



Functions

Digital Wide Dynamic Range

With the advanced Digital Wide Dynamic Range (DWDR) technology, the camera provides clear details in all those environments where the shooting scenes have brighter subjects and darker subjects. Thanks to the DWDR function, the images are shot with different exposure times depending on the lighter or darker parts which are then digitally combined to obtain perfect final images.

Smart H.265+ & Smart H.264+

With advanced scene-adaptive rate control algorithm, Envio smart encoding technology realizes the higher encoding efficiency than H.265 and H.264, provides high-quality video, and reduces the cost of storage and transmission.

Intelligent Video System (IVS)

IVS is an integrated video analytics algorithm that offers intelligent functions to monitor a scene for Tripwire violations, intrusion detection (Perimeter Protection) . A camera with IVS responds quickly and accurately to monitoring events in a specific area. In addition to scene analysis, the camera supports face detection. The camera also offers tampering detection by recognizing a dramatic scene change and generating an alert message to inspect the camera.

PoE technology

PoE is a technique that allows you to power IP cameras using the same cable that connects them to a local Ethernet network, provided it is of the twisted pair type, through the use of a POE network switch or a POE NVR. This technology is very useful when there are difficulties in finding electrical sources near the termination or even to reduce the number of elements and cables; for example, an IP camera can be powered directly from the ethernet network cable in Power over Ethernet, eliminating the power supply and its cable and making installation simpler and cleaner. The standard used by ENVIO cameras is IEEE 802.3af.

Protection IP65

IP65: the camera has a waterproof degree which guarantees total protection against the penetration of solid bodies, the penetration of liquids by drops, vapours, sprays and jets of water in any direction.

TECHNICAL SPECIFICATIONS

CAMERA

Image Sensor	1/2.8" Cmos Sensor
Max. Resolution	5 MP / 2592 (H) × 1944 (V)
Electronic Shutter Speed	1/50(1/60)s to 1/10.000s
Min. Illumination	0.01Lux@F1.2
Illumination	4 Array IR Led / 80 m
Illuminator On/Off Control	Auto/Manual
PTZ	-

LENS

Lens Type	Fixed focal
Focal Length/Angle of View	4 mm / 72°
Iris Control	-

VIDEO

Video Frame Rate	Main stream: 2880x1616@20fps, 2560x1440@25fps, 2304x1296@25fps, 1920x1080@25fps Sub-stream: 800x448@25fps
Smart Function	Human Recognition/Face Recognition/Video Analysis
Illumination Mode	IR Mode
Smart Codec	H.264 / H.265 / H.265+

AUDIO

Built-in MIC	-
Two-way audio	-
Audio Compression	-

ALARM

Alarm	-
-------	---

NETWORK

Network Interface	1*RJ45 10/100M adaptive Ethernet port
Protocol	IPv4, https, TCP/IP, FTP, NTP, RTSP, UDP, SMTP, DNS, DDNS
ONVIF	Yes
P2P	XMEye - XMEye Pro
IE Browser	Edge, Chrome, Firefox
WiFi/SD-Card	- / -

POWER

Power Supply/Consumption	12V DC/PoE (802.3af/3a7) / < 5W
--------------------------	---------------------------------

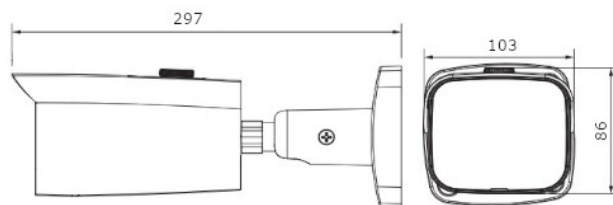
STRUCTURE

Material/Protection	Metal / IP65
Dimensions/Weight	297mm × 103 mm x 86mm / 0.9 kg

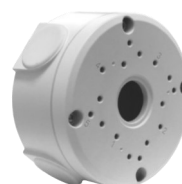
INSTALLATION MODE



TECHNICAL DRAWING



ACCESSORIES



ETJ-JB04



ETJ-JB01



ETP-15SF12H



ETS-POE-4



ETS-POE-8



ETS-POE-16

ENVIO SECURITY SYSTEMS

DN2, E85, Km 150 + 300m,
Ramnicu Sarat,
Buzau, Zip code: 127480,
Romania