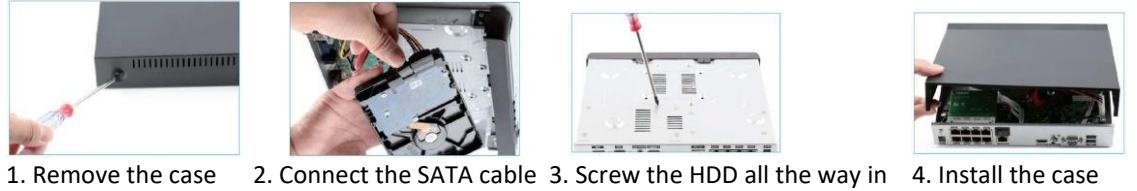




AML-808 Guida all'installazione rapida

Hard disk installation

Please install the hard disk first. Otherwise, the video recorder can only monitor normally, but cannot record or play.



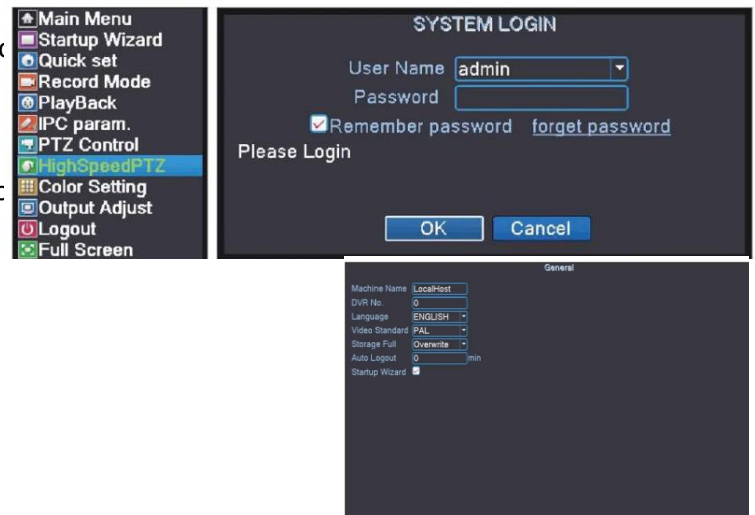
System Access

After normal startup, you need to log in first, and the system will provide the corresponding function according to the user's permission. Right-click – (Main Menu).

Default username: admin

Password:(leave blank, password blank)

Note: The XVR offers password setting. Don't forget to set up security questions and answers in case you forget the password.



General

Right-click > **[Main Menu]>[System]>[General][Disk Full]**

Choose Overwrite: Continue recording video and cover previous video while HDD memory is full.

Choose Stop: Stop recording videos while the HDD memory is full.

[Auto Logout] You can set 0-60 minutes automatic standby, 0 minutes means you don't set the standby time.

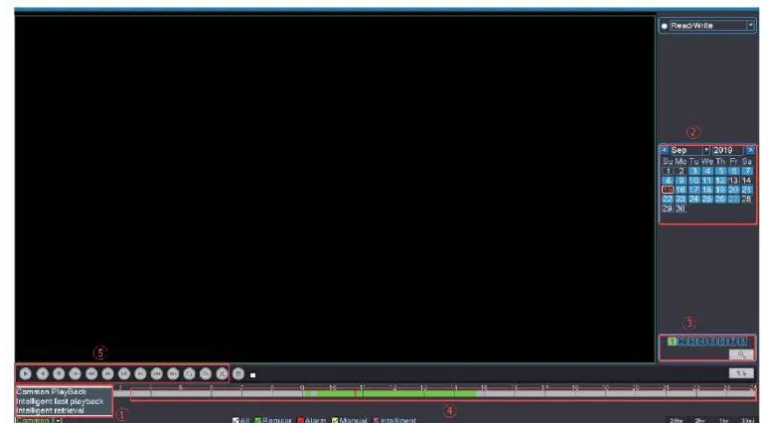
[Startup Wizard] Select to get the startup wizard when the system restarts (uncheck as default)

Video Playback

Right-click > **[Main Menu]>[PlayBack]**

1. Choose Play Mode
2. Choose Video Date
3. Playback channel option
4. Video playback time
5. Playback control button

	Start Playback		Play Backward
	Stop Playing		Slow Playback
	Rewind/Fast-forward		Prev/Next Frame
	Prev/ Next File		Repeat Playback
	Full Screen		Start Editing



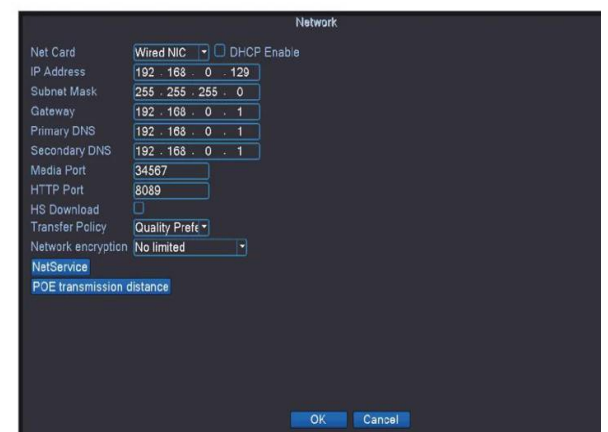
Network configuration

Connect NVR to Router > **Right Click > [Main Menu] > [Network]**

[Enable DHCP] Check this to automatically obtain the IP address assigned by the server.

[IP Address] Must be a unique IP address on the same LAN segment to avoid conflicts with other equipment in the local area.

[HTTP Port] a port number for remote visit, the default value is 80.



Remote viewing via smartphone

1. Install the software: scan the QR code or search XMEye in the APP store to download it.

When turning on the NVR for the first time > **[Camera Test] > [Time Setup Wizard] > [Network] > [Install Mobile APP]**

2. Install correctly, register user, add device and start remote viewing. Scan the SN QR code

Username: admin (default)

Password: The password you chose for the XVR

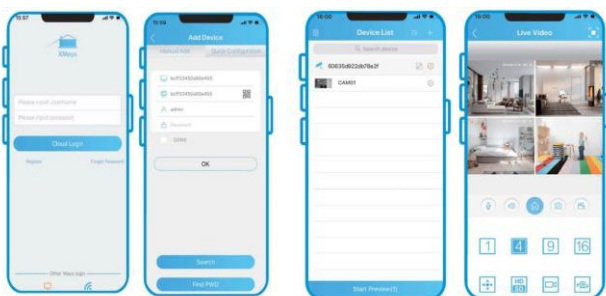


Step 1: Tap register and enter your username and password to create a new account

Step 2: Click "+" to add devices: Enter the serial number, username and password

Step 3: After adding the device, click on it to connect the server

Step 4: Connect successfully and start viewing the video



Local/remote viewing via PC

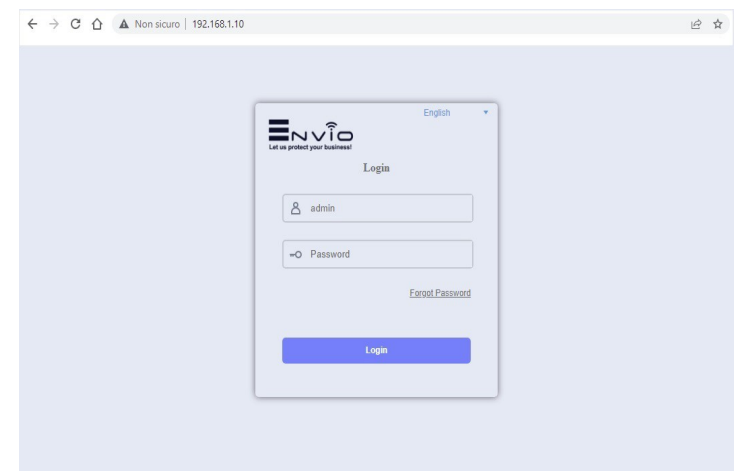
Open your Internet browser (such as Chrome, Edge, Opera, Firefox etc.).

In the address bar of your browser, enter the IP address of the XVR.

Allow you to download the VideoPlayTool plugin. Install it and refresh the page.

Note: To search for the IP address of the XVR, download the device manager

from the website www.enviosecurity.com, support section and then download.



Note:

For the complete manual, visit: www.enviosecurity.com

Enter your device login credentials

